



**tray
insert**



tray





fold bottom up



**rotate tray insert
fold bottom end up**



flip tray insert



rotate tray insert and fold bottom up





rotate tray insert again and fold bottom up







**flip tray insert
over and rotate**



begin weeding









flip insert tray over









rotate insert tray











flip insert tray









rotate tray



begin folding scores on tray











rotate tray and continue folding on scores













rotate tray



**begin weeding
tray**



















**continue folding
scores on tray**















**rotate and
continue
folding scores
on tray**



















**begin securing
tray insert
within tray**

**2 people suggested
for these steps**





































**begin securing
moj'eau bottle pieces
into tray**





























mojéau

































**thank you card
placed here**



**authentication card
placed here**



**completed
tray**



triangle box



USE AND CARE INSTRUCTIONS:
 Before first use please "prime" the filter with water and then thoroughly rinse with clean drinking water.

INSTRUCTIONS D'INSTALLATION ET D'ENTRETIEN:
 Avant la première utilisation, veuillez primer le filtre avec de l'eau et rincer soigneusement à l'eau potable. Veillez à ne pas utiliser d'eau du robinet pour le nettoyage.

INSTRUCCIONES DE USO Y CUIDADO:
 Antes del primer uso, primer el filtro con agua potable y luego lavar a fondo con agua potable. No utilice agua del grifo para limpiar el filtro.

tableaufilteredwater.com/water-assembly

ASSEMBLY / INSTRUCTIONS DE MONTAGE / INSTRUCCIONES DE MONTAJE



Produit de la série
 Filtration à charbon actif et membrane à osmose inverse. Le filtre à charbon actif élimine les goûts et les odeurs, tandis que la membrane à osmose inverse élimine les contaminants chimiques et les bactéries. Le filtre à charbon actif est rempli d'un charbon actif de haute qualité, qui agit comme un aimant pour les impuretés, les odeurs et les goûts. La membrane à osmose inverse agit comme un tamis ultra-fine, qui bloque les contaminants chimiques et les bactéries.

Produit de la série
 Filtration à charbon actif et membrane à osmose inverse. Le filtre à charbon actif élimine les goûts et les odeurs, tandis que la membrane à osmose inverse élimine les contaminants chimiques et les bactéries. Le filtre à charbon actif est rempli d'un charbon actif de haute qualité, qui agit comme un aimant pour les impuretés, les odeurs et les goûts. La membrane à osmose inverse agit comme un tamis ultra-fine, qui bloque les contaminants chimiques et les bactéries.

Produit de la série
 Filtration à charbon actif et membrane à osmose inverse. Le filtre à charbon actif élimine les goûts et les odeurs, tandis que la membrane à osmose inverse élimine les contaminants chimiques et les bactéries. Le filtre à charbon actif est rempli d'un charbon actif de haute qualité, qui agit comme un aimant pour les impuretés, les odeurs et les goûts. La membrane à osmose inverse agit comme un tamis ultra-fine, qui bloque les contaminants chimiques et les bactéries.

mojeau
 water filtration

tableaufilteredwater.com

**begin folding
scores on
triangle box**



USE AND CARE INSTRUCTIONS
Please read the label on each unit, and follow the instructions and care instructions. Do not use the unit if the label is missing or damaged.

INSTALLATION EQUIPMENT
The unit requires the following equipment:
- A standard household electrical outlet (115V, 60Hz)
- A standard household water supply line (1/2" diameter)
- A standard household drain line (1/2" diameter)

INSTRUCTIONS DE USO Y CUIDADO
Por favor, lea el manual de instrucciones de cada unidad y siga las instrucciones de uso y cuidado. No use la unidad si el manual de instrucciones está faltante o dañado.

Labels: tableaufilteredwater.com/mojeanassembly

Product of USA
This unit is designed and manufactured in the USA. It is made of high quality materials and is built to last. It is a safe and effective way to filter your water. It is a great gift for anyone who cares about their health and the health of their family.

Product of Canada
This unit is designed and manufactured in Canada. It is made of high quality materials and is built to last. It is a safe and effective way to filter your water. It is a great gift for anyone who cares about their health and the health of their family.

Product of Mexico
This unit is designed and manufactured in Mexico. It is made of high quality materials and is built to last. It is a safe and effective way to filter your water. It is a great gift for anyone who cares about their health and the health of their family.

mojean
the filtered water

tableaufilteredwater.com



USE AND CARE INSTRUCTIONS:
Before first use, please wash each water filter with soap and water thoroughly. Do not use for hot water.

INSTRUCTIONS EN FRANÇAIS:
AVANT D'UTILISER LE FILTRE À CARBON, Lavez-le soigneusement à l'eau savonneuse. Ne pas utiliser pour l'eau chaude.

INSTRUCCIONES DE USO Y CUIDADO:
Antes del primer uso, lavar cada filtro con agua jabonosa. No utilizar para agua caliente.

laboulter.com/water.com/mojeau

ASSEMBLY INSTRUCTIONS

INSTRUCTIONS DE MONTAGE

DE MONTAJE

1. Open the top of the box and remove the top flap.
2. Lay the box flat on a clean, dry surface.
3. Fold the side flaps inward.
4. Fold the bottom flaps inward.
5. Press the bottom flaps together to form the base.
6. Fold the top flaps inward.
7. Press the top flaps together to form the lid.
8. Fold the top flaps inward.
9. Press the top flaps together to form the lid.

Product 100% Recycled Paper
This product is made from 100% recycled paper, including 100% recycled fibers. It is a sustainable choice for your business and the environment.

MADE IN CANADA

mojeau
the water filter









tableaufit

mojeau
the art of living

Made in
Canada

Fabriqué
au Canada

Made in
Canada

Instructions 101
Please recycle this box.
To open the box, pull the top
flaps up and unfold the side
flaps. Then, pull the bottom
flaps up and secure the box
by folding the bottom flaps
inwards.

Instructions 102
Please recycle this box.
To open the box, pull the top
flaps up and unfold the side
flaps. Then, pull the bottom
flaps up and secure the box
by folding the bottom flaps
inwards.

Instructions 103
Please recycle this box.
To open the box, pull the top
flaps up and unfold the side
flaps. Then, pull the bottom
flaps up and secure the box
by folding the bottom flaps
inwards.





USE AND CARE INSTRUCTIONS:
This product is not intended for use as a
sterilant. It is intended for use as a
disinfectant. Use only on hard, non-porous
surfaces. Do not use on fabrics, wood, or
other porous materials. Do not use on
food contact surfaces. Do not use on
medical equipment. Do not use on
electrical equipment. Do not use on
stone, marble, or other natural materials.
Do not use on painted surfaces. Do not
use on waxed surfaces. Do not use on
finished wood. Do not use on
finished metal. Do not use on
finished plastic. Do not use on
finished glass. Do not use on
finished leather. Do not use on
finished vinyl. Do not use on
finished fabric. Do not use on
finished paper. Do not use on
finished cardboard. Do not use on
finished metal. Do not use on
finished plastic. Do not use on
finished glass. Do not use on
finished leather. Do not use on
finished vinyl. Do not use on
finished fabric. Do not use on
finished paper. Do not use on
finished cardboard.



English: For disinfection of hard, non-porous surfaces. Do not use on fabrics, wood, or other porous materials. Do not use on food contact surfaces. Do not use on medical equipment. Do not use on electrical equipment. Do not use on stone, marble, or other natural materials. Do not use on painted surfaces. Do not use on waxed surfaces. Do not use on finished wood. Do not use on finished metal. Do not use on finished plastic. Do not use on finished glass. Do not use on finished leather. Do not use on finished vinyl. Do not use on finished fabric. Do not use on finished paper. Do not use on finished cardboard.

French: Pour la désinfection des surfaces dures, non poreuses. Ne pas utiliser sur les tissus, le bois ou d'autres matériaux poreux. Ne pas utiliser sur les surfaces en contact avec la nourriture. Ne pas utiliser sur l'équipement médical. Ne pas utiliser sur l'équipement électrique. Ne pas utiliser sur le marbre, le granit ou d'autres matériaux naturels. Ne pas utiliser sur les surfaces peintes. Ne pas utiliser sur les surfaces cirées. Ne pas utiliser sur le bois fini. Ne pas utiliser sur le métal fini. Ne pas utiliser sur le plastique fini. Ne pas utiliser sur le verre fini. Ne pas utiliser sur le cuir fini. Ne pas utiliser sur le vinyle fini. Ne pas utiliser sur le tissu fini. Ne pas utiliser sur le papier fini. Ne pas utiliser sur le carton fini.

Spanish: Para la desinfección de superficies duras, no porosas. No usar en tejidos, madera u otros materiales porosos. No usar en superficies de contacto con alimentos. No usar en equipo médico. No usar en equipo eléctrico. No usar en mármol, granito u otros materiales naturales. No usar en superficies pintadas. No usar en superficies enceradas. No usar en madera acabada. No usar en metal acabado. No usar en plástico acabado. No usar en vidrio acabado. No usar en cuero acabado. No usar en vinilo acabado. No usar en tela acabada. No usar en papel acabado. No usar en cartón acabado.

mojeau
the science of health

table





tableaufilteredwater.com

mojeau
by HydroCanna

USE AND CARE INSTRUCTIONS:
This water filter is designed to be used with a standard 1/2 inch diameter faucet. It is not intended for use with a water cooler or other water dispensing system. The filter should be replaced every 6 months or 100 gallons of water filtered, whichever comes first. For more information, please visit our website at www.tableaufilteredwater.com.



1. Remove the cap from the top of the filter.
2. Turn the filter clockwise until it is fully seated in the faucet.
3. Push the filter down until it is fully seated in the faucet.
4. Turn the filter counter-clockwise until it is fully seated in the faucet.
5. Push the filter down until it is fully seated in the faucet.
6. Turn the filter clockwise until it is fully seated in the faucet.
7. Push the filter down until it is fully seated in the faucet.
8. Turn the filter counter-clockwise until it is fully seated in the faucet.
9. Push the filter down until it is fully seated in the faucet.

IMPORTANT SAFETY INFORMATION:
This water filter is not intended for use with a water cooler or other water dispensing system. The filter should be replaced every 6 months or 100 gallons of water filtered, whichever comes first. For more information, please visit our website at www.tableaufilteredwater.com.

MADE IN CANADA
Produced in Canada
Produced in Canada
Produced in Canada



USE AND CARE INSTRUCTIONS
Please read and follow these instructions carefully. Failure to follow these instructions may void the warranty. Consult the user manual for more information.

INSTRUCTIONS D'UTILISATION ET D'ENTRETIEN
Veuillez lire attentivement ces instructions. Le non-respect de ces instructions peut annuler la garantie. Consultez le manuel de l'utilisateur pour plus de détails.

INSTRUCTIONS DE MONTAGE
1. Retirez le filtre de son emballage et vérifiez qu'il est intact.



PRECAUTIONS: Do not touch the filter with your hands. The filter is sensitive to oils and dirt. Wash your hands before and after handling the filter. Do not use the filter if it is damaged or if the water tastes or smells unusual. Do not use the filter if you are pregnant or nursing. Do not use the filter if you have a medical condition that requires you to drink filtered water. Do not use the filter if you are allergic to the materials used in the filter. Do not use the filter if you are allergic to the materials used in the housing. Do not use the filter if you are allergic to the materials used in the housing. Do not use the filter if you are allergic to the materials used in the housing.

PRECAUTIONS: No tocar el filtro con las manos. El filtro es sensible a los aceites y la suciedad. Lávese las manos antes y después de manipular el filtro. No utilizar el filtro si está dañado o si el agua sabe o huele extraño. No utilizar el filtro si está embarazada o lactando. No utilizar el filtro si tiene una condición médica que requiera agua filtrada. No utilizar el filtro si es alérgico a los materiales utilizados en el filtro. No utilizar el filtro si es alérgico a los materiales utilizados en el alojamiento. No utilizar el filtro si es alérgico a los materiales utilizados en el alojamiento.

mojeau
en tableaufilteredwater.com

tableaufilteredwater.com



USE AND CARE INSTRUCTIONS:
Always hold and insert each side with equal force
under and over. Firmly push. Do not use
the top flap.

INSTRUCTIONS D'ASSEMBLAGE
ET D'ENTRETIEN:
Toujours tenir et insérer chaque côté avec
une force égale en dessous et au-dessus.
Pousser fermement. Ne pas utiliser
le rabat supérieur.

INSTRUCCIONES DE USO
Y CUIDADO:
Siempre sostenga e inserte cada lado con
fuerza igual por debajo y por encima.
Empuje con firmeza. No use el
borde superior.

- 1
- 2
- 3
- 4
- 5
- 6
- 7
- 8
- 9

Product # 10-1
Designed and manufactured by
Tableau Filtered Water, Inc.
© 2015 Tableau Filtered Water, Inc.
All rights reserved. No part of this
document may be reproduced without
written permission from Tableau Filtered
Water, Inc. For more information, visit
tableaufilteredwater.com

Produit # 10-1
Conçu et fabriqué par
Tableau Filtered Water, Inc.
© 2015 Tableau Filtered Water, Inc.
Tous droits réservés. Aucune partie de
ce document ne peut être reproduite
sans la permission écrite de Tableau
Filtered Water, Inc. Pour plus
d'informations, visitez
tableaufilteredwater.com

Producto # 10-1
Diseñado y fabricado por
Tableau Filtered Water, Inc.
© 2015 Tableau Filtered Water, Inc.
Todos los derechos reservados. Ninguna
parte de este documento puede ser
reproducida sin el consentimiento
escrito de Tableau Filtered Water, Inc.
Para obtener más información, visite
tableaufilteredwater.com

tableaufilteredwater.com



USE AND CARE INSTRUCTIONS:
Always read and follow each unit's user manual
and use the appropriate disposal method for
the filter cartridge.

INSTRUCCIONES DE USO Y CUIDADO:
Siempre lea y siga cada manual de usuario
de la unidad y use el método de eliminación
apropiado para el cartucho de filtro.

Product: 18.4
Product Name: Pureit 18.4
Product Code: 18.4
Product Weight: 1.5 lbs
Product Dimensions: 18.4 x 18.4 x 18.4
Product Color: White
Product Material: Plastic
Product Warranty: 1 Year
Product Support: 1-800-368-3683

Product: 18.4
Product Name: Pureit 18.4
Product Code: 18.4
Product Weight: 1.5 lbs
Product Dimensions: 18.4 x 18.4 x 18.4
Product Color: White
Product Material: Plastic
Product Warranty: 1 Year
Product Support: 1-800-368-3683

tableaufilteredwater.com





USE AND CARE INSTRUCTIONS:
Always first use product with water from
tap and use immediately. Do not use for
hot liquids.

INSTRUCCIONES DE USO Y CUIDADO:
Antes de utilizar el producto, asegúrese de
que el agua que se va a utilizar es agua
de grifo. No utilizar para líquidos calientes.
Usar inmediatamente.

INSTRUCTIONS D'UTILISATION:
Avant d'utiliser le produit, assurez-vous
d'utiliser de l'eau du robinet. Ne pas utiliser
pour des liquides chauds. Utiliser
immédiatement.



mojeau
the best way to
filter water

mojeaufilteredwater.com



USE AND CARE INSTRUCTIONS
Please read and understand each step before using
water and read thoroughly. Consult your user
manual for the instructions.

INSTRUCTIONS EN FRANÇAIS
Lisez attentivement les instructions d'usage et
de maintenance avant d'utiliser le filtre à eau.
Assurez-vous de bien comprendre toutes les
étapes de l'installation et de l'entretien.
Consultez votre manuel d'utilisateur pour plus
de détails.

INSTRUCCIONES DE USO Y CUIDADO
Antes de utilizar el filtro de agua, lea y entienda
todas las instrucciones de uso y mantenimiento.
Asegúrese de comprender todos los pasos de
la instalación y el mantenimiento.

ASSEMBLY INSTRUCTIONS
1. Peel off the top cover and place it on the
bottom panel.
2. Fold the side flaps and glue them to the
bottom panel.
3. Fold the top flaps and glue them to the
bottom panel.

INSTRUCCIONES DE MONTAJE
1. Quite la tapa superior y colóquela en el
panel inferior.
2. Pliegue las pestañas laterales y péguelas
al panel inferior.
3. Pliegue las pestañas superiores y péguelas
al panel inferior.

INSTRUCTIONS D'ASSEMBLAGE
1. Décollez le couvercle supérieur et placez-le
sur le panneau inférieur.
2. Pliez les rabats latéraux et collez-les au
panneau inférieur.
3. Pliez les rabats supérieurs et collez-les au
panneau inférieur.

INSTRUCTIONS DE MONTAJE
1. Despegue la tapa superior y colóquela en
el panel inferior.
2. Pliegue las pestañas laterales y péguelas
al panel inferior.
3. Pliegue las pestañas superiores y péguelas
al panel inferior.

Product of USA
Please refer to the user manual for detailed
instructions on how to use and maintain the
filter. The filter is designed to last for up to
6 months. For more information, please visit
mojeau.com. Thank you for choosing Mojeau!
L'UNITÉ LIÉGÈRE
WARRANTY

Product of USA
Please refer to the user manual for detailed
instructions on how to use and maintain the
filter. The filter is designed to last for up to
6 months. For more information, please visit
mojeau.com. Thank you for choosing Mojeau!
L'UNITÉ LIÉGÈRE
WARRANTY

mojeau
The Essential

mojeaufilteredwater.com



USE AND CARE INSTRUCTIONS:

1. Please read and follow all instructions carefully. Failure to follow these instructions may void the warranty. ©2018 Tableau Water, Inc. All rights reserved.

INSTRUCCIONES DE USO Y CUIDADO:

1. Lea detenidamente todas las instrucciones. El no seguir las instrucciones puede anular la garantía. ©2018 Tableau Water, Inc. Todos los derechos reservados.

<https://tableaufilteredwater.com/instructions-en-by>

ASSEMBLY INSTRUCTIONS

INSTRUCCIONES DE MONTAJE

1. Lay out the bottom panel and fold up the side panels.
2. Insert the top panel into the side panels.
3. Fold the top panel down and secure the top flaps.
4. Fold the side panels inward to form the box walls.
5. Fold the top panel down and secure the top flaps.
6. Fold the side panels inward to form the box walls.
7. Fold the top panel down and secure the top flaps.
8. Fold the side panels inward to form the box walls.
9. Fold the top panel down and secure the top flaps.

Important Note: This product is not intended for use in areas with high levels of chlorine or other harsh chemicals. For more information, please contact our customer support team.

mojeau
water

tableaufilteredwater.com



USE AND CARE INSTRUCTIONS:
Always use the proper water filter cartridge
and use the correct filter housing. Otherwise, the
filter may not work properly.

**INSTRUCCIONES DE MANTENIMIENTO
Y CUIDADO:**
1. Siempre use el cartucho de agua filtrada
correcto y asegure el filtro correctamente.
2. No use el filtro si el agua no fluye
correctamente. De lo contrario, el agua
no será filtrada correctamente.

tableaufilteredwater.com/mojeauassembly
ASSEMBLY INSTRUCTIONS
INSTRUCCIONES DE MONTAJE

1. Remove the top cover and set it aside.
2. Insert the water filter cartridge into the filter housing.
3. Push the filter cartridge down until it is fully seated.
4. Turn the filter housing clockwise to lock the filter in place.
5. Push the filter housing down until it is fully seated.
6. Turn the filter housing counter-clockwise to unlock the filter.
7. Lift the filter housing and remove the filter cartridge.
8. Wash the filter housing with clean water.
9. Reinstall the filter housing and the filter cartridge.

mojeau
TABLEAU FILTERED WATER

tableaufilteredwater.com





Down your front/montez
your cardboard box with your hands.
L'ouvrez par votre front/montez votre
boîte en carton avec vos mains.

mojeau
parfums

Produit en France et
parfums de haute qualité.
Majoris in Canada
Parfums au Canada
Meyers au Canada

- ASSEMBLY INSTRUCTIONS
1. Remove the top of the box by pulling it upwards.
 2. Lift the top of the box and fold it down.
 3. Push the top of the box down to lock it in place.
 4. Push the top of the box down to lock it in place.
 5. Push the top of the box down to lock it in place.
 6. Push the top of the box down to lock it in place.
 7. Push the top of the box down to lock it in place.
 8. Push the top of the box down to lock it in place.
 9. Push the top of the box down to lock it in place.

tableau



OWN YOUR PROJECT.
Possédez votre projet.
Tous droits réservés.

USE AND CARE INSTRUCTIONS:
Always use and care with water filter
under and over head. Read and follow
instructions carefully. Consult or call
for assistance.

INSTRUCTIONS D'UTILISATION ET D'ENTRETIEN:
Toujours utiliser et entretenir le filtre
d'eau sous et sur la tête. Lire et suivre
les instructions attentivement. Consultez
ou appelez pour obtenir de l'aide.



tableaufilteredwater.com/faq

ASSEMBLY INSTRUCTIONS

INSTRUCTIONS DE MONTAGE



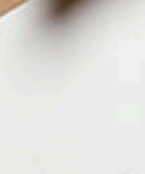
Tableau
Water Filter

tableaufilteredwater.com



Over your roof panel.
Possédez votre toit.
Über Ihrem Dachpaneel.
Besitzen Sie Ihr Dachpaneel.

LES ÉTAPES D'ASSEMBLAGE



mojeau

tableau



OWN YOUR MOUNT.
Possédez votre montage.
¡Apropiate tu montaje!

USE AND CARE INSTRUCTIONS
Please read and follow with all other items
before and after assembly. Check for
updates and new technology. Download with
the app.



<https://www.thermoacoustic.com/assembly>

ASSEMBLY INSTRUCTIONS **MONTAJE INSTRUCCIONES**
DISASSEMBLY INSTRUCTIONS **DESCONTAJE INSTRUCCIONES**



tableau

Own your profane.
Posséder votre profane.
tableaufilteredwater.com

USE AND CARE INSTRUCTIONS:
Please refer to the product manual with every assembly, disassembly, and use of the product. Use the product in a safe and secure environment. Do not use the product in a hazardous environment. Do not use the product in a hazardous environment.

INSTRUCTIONS EVALUATION ET CERTIFICATION:
The product is designed to be used in a safe and secure environment. The product is designed to be used in a safe and secure environment. The product is designed to be used in a safe and secure environment.



ASSEMBLY INSTRUCTIONS:
1. Remove the top cap from the filter housing.
2. Insert the filter cartridge into the housing.
3. Tighten the cap and ensure it is secure.



Product 101:
The product is designed to be used in a safe and secure environment. The product is designed to be used in a safe and secure environment. The product is designed to be used in a safe and secure environment.

tableau
the filtered water

tableaufilteredwater.com

OWN YOUR OWN WATER. PROTECT YOUR OWN WATER. FROM THE SOURCE TO THE TAP.



USE AND CARE INSTRUCTIONS:
Always use clean water when cleaning the filter. Do not use soap, detergent, or any other cleaning agents. Rinse thoroughly with clean water.

INSTRUCTIONS ON INSTALLATION:
1. Turn the filter clockwise until it clicks into place. Do not force it.

INSTRUCTIONS ON USE:

WARNING:
Do not use the filter for drinking water.

Labels at tableafilteredwater.com/mojeauassembly

ASSEMBLY INSTRUCTIONS:

INSTRUCTIONS DE MONTAGE:



Product 30.4:
This product is not for use in areas where the water supply is not safe. It is not intended for use in areas where the water supply is not safe. It is not intended for use in areas where the water supply is not safe.

After installation:
After installation, the filter should be used for the first time. The filter should be used for the first time. The filter should be used for the first time.

Product 30.4:
This product is not for use in areas where the water supply is not safe. It is not intended for use in areas where the water supply is not safe. It is not intended for use in areas where the water supply is not safe.

mojeau
the filtered water

tableafilteredwater.com

mojeau

FRANÇAIS
 Ce filtre à eau est conçu pour filtrer les impuretés, les bactéries et les parasites présents dans l'eau du robinet. Il ne filtre pas les produits chimiques, les métaux lourds, les médicaments ou les produits de nettoyage. Pour plus d'informations, consultez le site tableaufilteredwater.com.

ENGLISH
 This water filter is designed to filter out impurities, bacteria, and parasites found in tap water. It does not filter out chemicals, heavy metals, pharmaceuticals, or cleaning products. For more information, please visit tableaufilteredwater.com.



ASSEMBLY INSTRUCTIONS
 INSTRUCTIONS D'ASSEMBLAGE

INSTRUCTIONS D'UTILISATION
 ET D'ENTRETIEN

INSTRUCTIONS DE USO Y CUIDADO

Este filtro de agua está diseñado para filtrar las impurezas, bacterias y parásitos presentes en el agua del grifo. No filtra los productos químicos, metales pesados, medicamentos o productos de limpieza. Para más información, consulte el sitio tableaufilteredwater.com.

tableaufilteredwater.com





mojéau

How often to change the filter
The filter should be changed every 2-3 months, depending on water quality and usage. For best performance, we recommend changing the filter every 2 months.

How to use the filter
1. Fill the bottle with water.
2. Screw on the filter cap.
3. Turn the cap clockwise until it is tight.
4. The water is now filtered and ready to drink.

How to clean the filter
1. Remove the filter cap.
2. Rinse the filter with clean water.
3. Let the filter dry completely before reusing.



1



2



3



4

tableaufilteredwater.com

mojéau

the filtered water





mojeau

tableaufilteredwater.com

tableaufilteredwater.com/mojeauassembly



USE AND CARE INSTRUCTIONS
Before first use please wash with soap and water and allow to dry thoroughly. Do not use with any other water treatment devices.
The first filtration

INSTALLATION

OPERATION

CLEANING

Remove the filter from the tap and place in a clean container. Rinse with clean water. Do not use soap or detergent.

Replace the filter every 3 months or when the flow rate is noticeably reduced.



ASSEMBLY INSTRUCTIONS

OPERATION INSTRUCTIONS

CLEANING INSTRUCTIONS

REPLACEMENT INSTRUCTIONS

DISPOSAL INSTRUCTIONS

WARRANTY

CONTACT INFORMATION

MADE IN CANADA

MADE IN CANADA

MADE IN CANADA



mojéau

Made in Canada
Fabriqué au Canada
Hecho en Canadá



INSTRUCTIONS
INSTRUCTIONS
INSTRUCCIONES DE USO

INSTRUCTIONS
INSTRUCTIONS
INSTRUCCIONES DE USO

tableafilteredwater.com

mojéau



mojeau
water filter

Instructions in English, French, and Spanish.



Instructions in English, French, and Spanish.



















**completed
triangle box
showing all
weeded pieces
to discard**



**outer
wrap**





mojeau
by the
tableau

mojeau
by the
tableau

**begin folding
scores on
outer wrap**



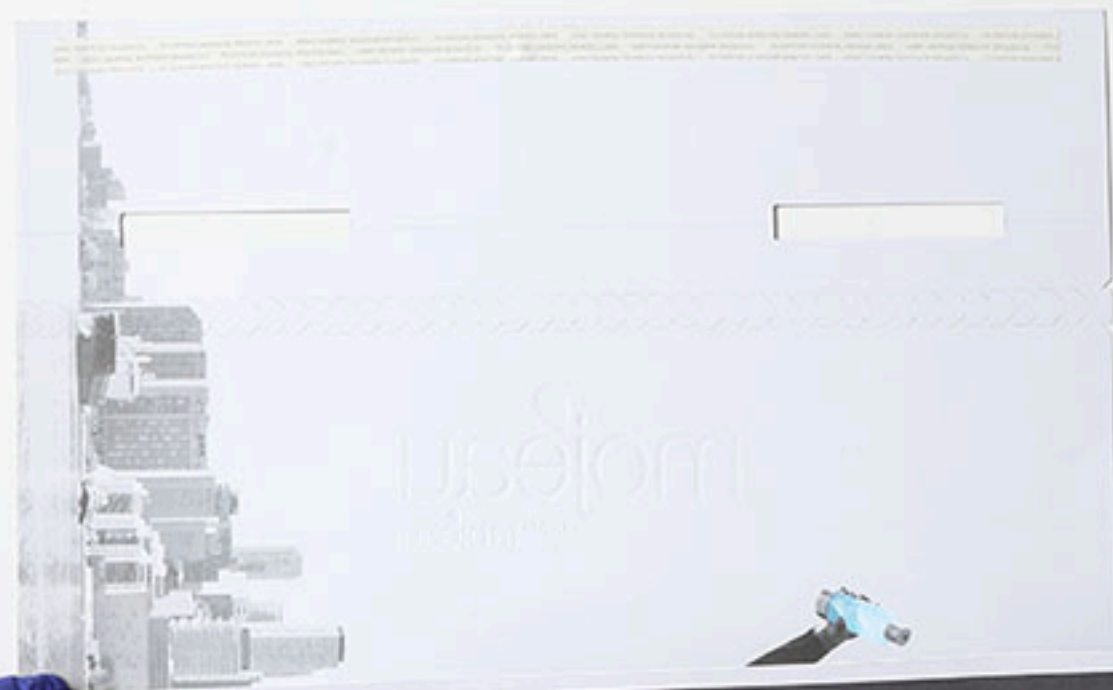


tableaufilteredwater.com





tableaufilteredwater.com



tableaufilteredwater.com

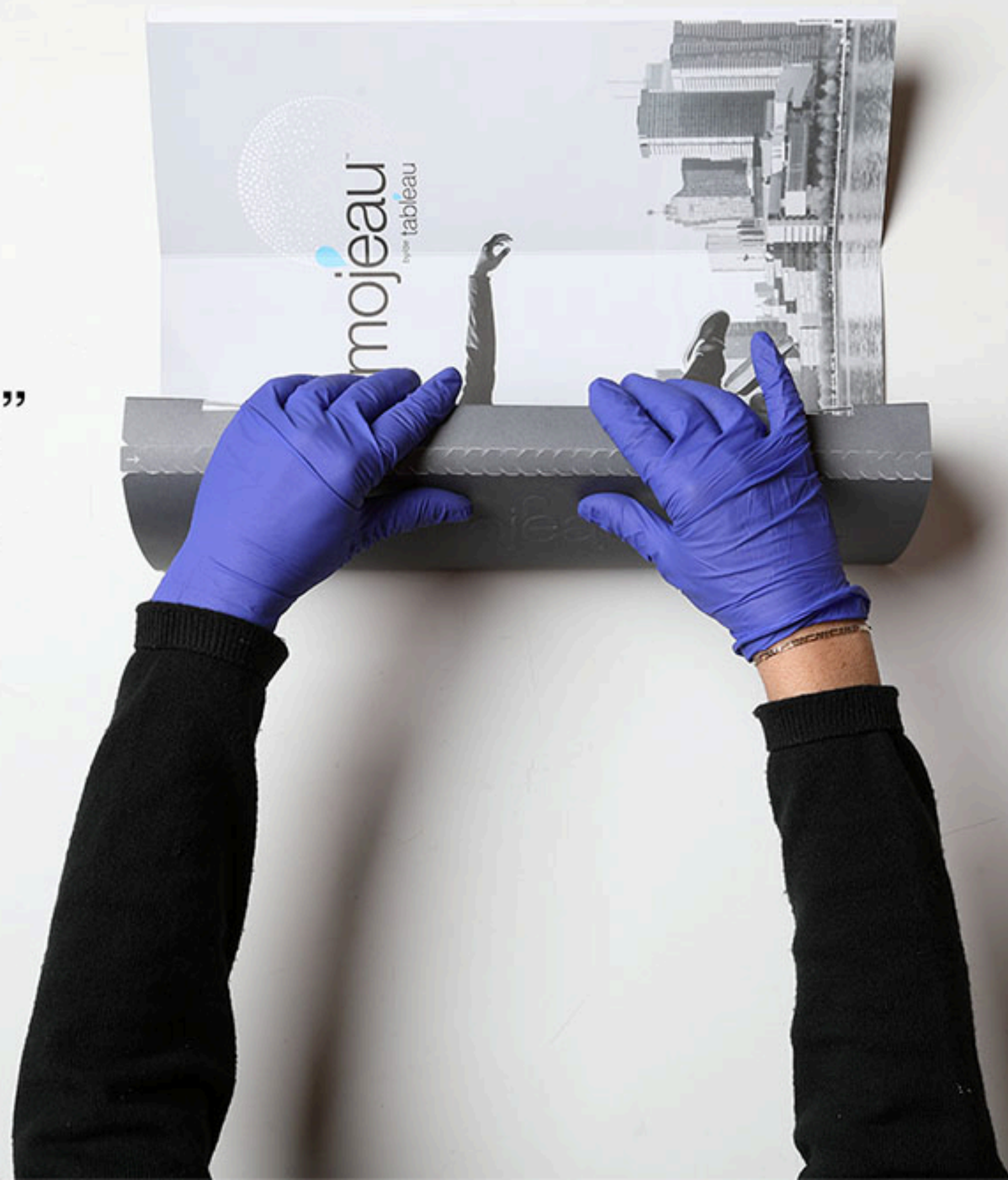








**very “lightly”
fold zipper
score lines**





mojeau[™]
by the tableau



mojeau[™]
by tableau

mojeau



mojeau
by tableau

mojeau
by tableau

Give your roof what
it deserves. We're proud
to be the #1 in the world.



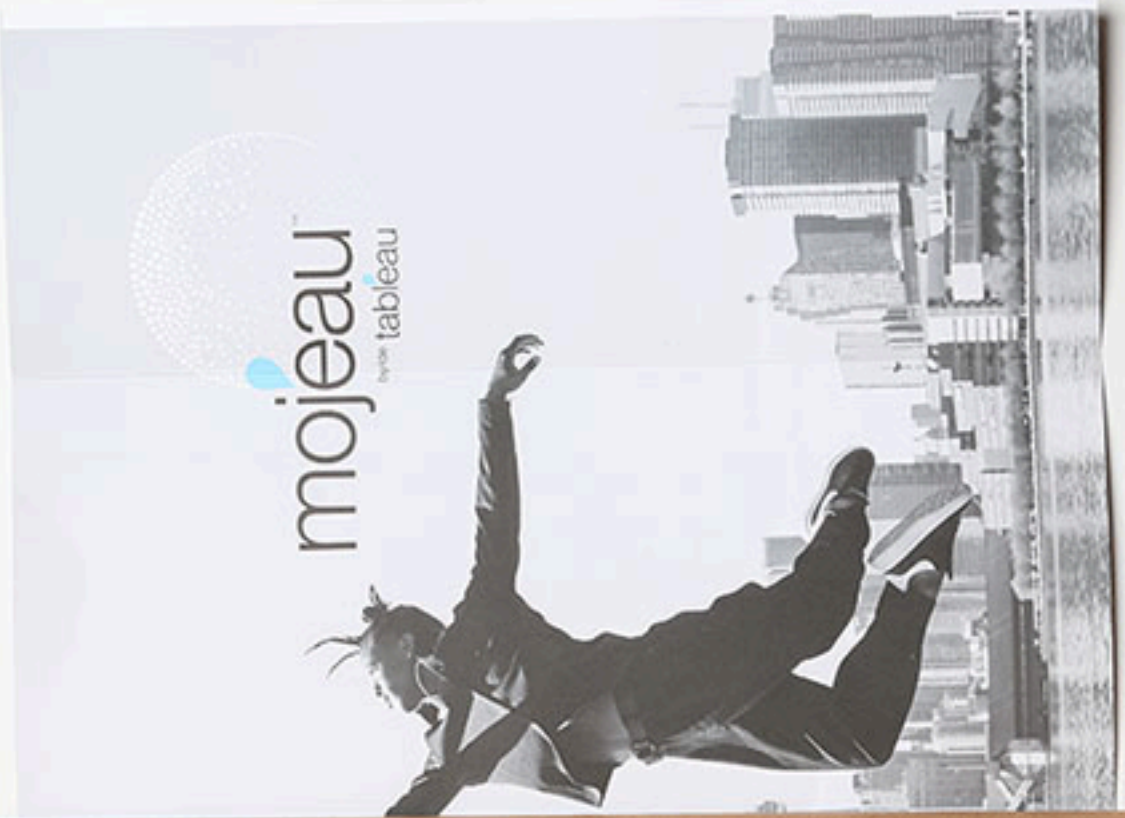
mojeau
by tableau

eau
by tableau

Give your product
presence with proof
and create the real world.

mojeau
by tableau





mojeau[™]
by tableau

One... For Life.

Équipez-vous avec le water
bouteille pour une hydratation
sûre et plus de plaisir

000

How Far Does Your Water
Have to Travel?

Quelle distance votre eau
doit-elle parcourir ?

Quel tan légers boire que
votre su santé?

24oz | 710ml





tableaufilteredwater.com

















